



# SOLITEX EXTASANA®

## Application & Fixing Guide – Timber Frame New Zealand



Weather Resistive Barrier for EQUITONE and CEDRAL Fully Ventilated Façade System

**EQUITONE**  
**CEDRAL**

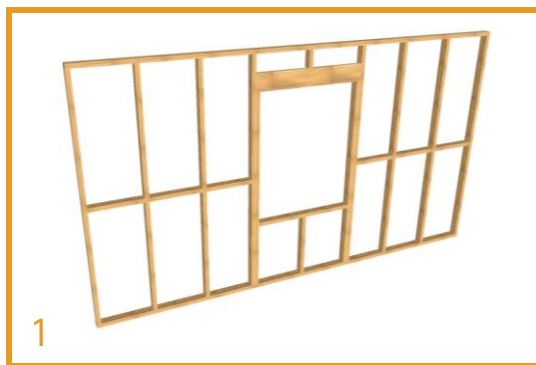




**IMPORTANT**

DUPLEX double sided tape is not intended to provide long term fixing but is an installation aid to hold the membrane in place until the façade mounting system is in place.

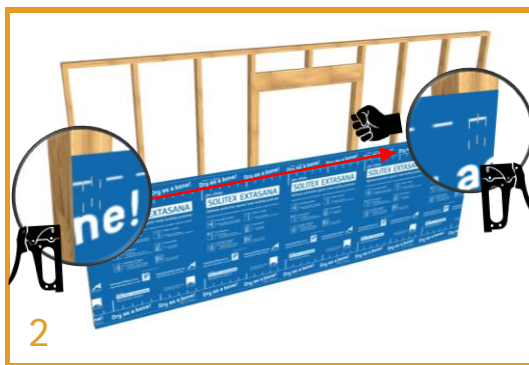
Membrane should be pulled taut to ensure TESCON® EXTORA tape can be easily installed and adequate pressure applied using the PRESSFIX tool.



1

**Preparing Timber Framing**

Ensure all studs are aligned and free from splinters. Plane or sand where necessary.



2

**Initial Fixing Point**

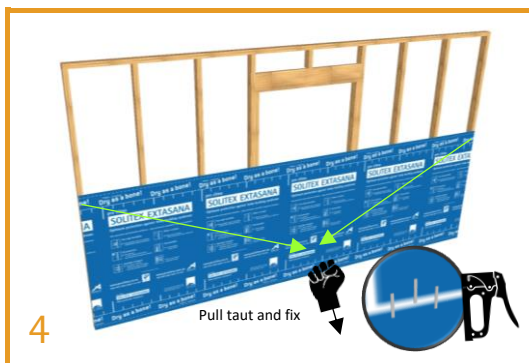
Apply 5-6 staples in the top corner before unrolling the membrane over the studs. Pull taut and fix opposite top corner with 5-6 staples.



3

**Fix top edge SOLITEX EXTASANA®**

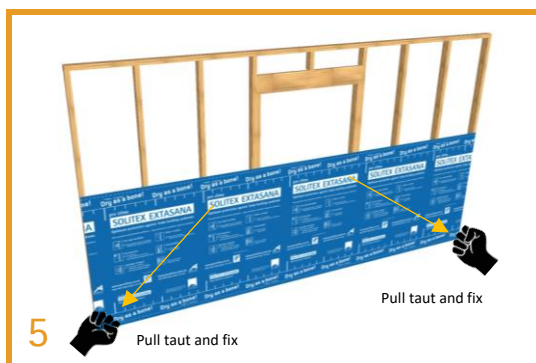
Fix the membrane at each stud along the top edge ensuring the staples are within 150 mm from the edge.



4

**Triangulate and Fasten**

Pull the membrane down and taut at the centre and fix with 2-3 staples at the bottom edge.



5

**Fix Bottom Corners**

Pull taut and fix each bottom corner with 2-3 staples.



6

**Successive Layers of SOLITEX EXTASANA®**

Apply successive layers of SOLITEX EXTASANA® using the upside-down sequence compared to the bottom layer.



SYSTEM

Weather Resistive Barrier

Wall



IMPORTANT

The PRESSFIX tool MUST be used to apply pressure to TESCON EXTORA® and TESCON EXTOSEAL® after application to ensure the glue is activated and can reach maximum hold strength.



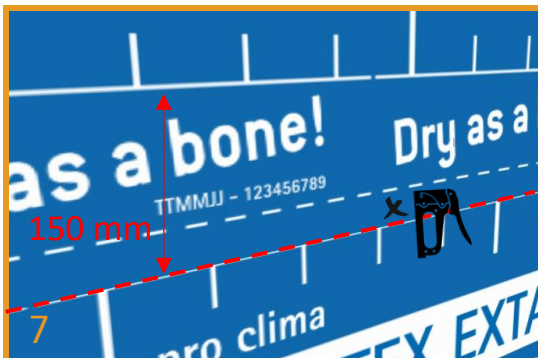
TESCON EXTORA APPLICATION



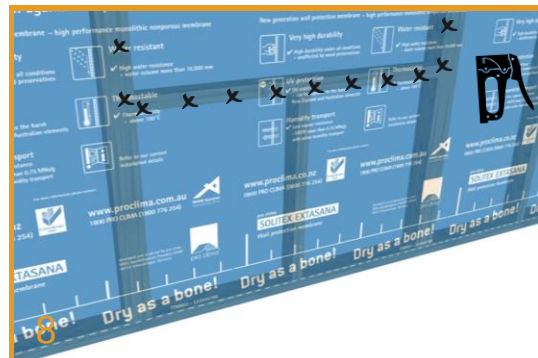
WINDOW CUTTING / DRESSING



PRESSFIX is a malleable plastic tool for applying pressure to pro clima Adhesive TESCON® Tapes to ensure long term durable bonding.



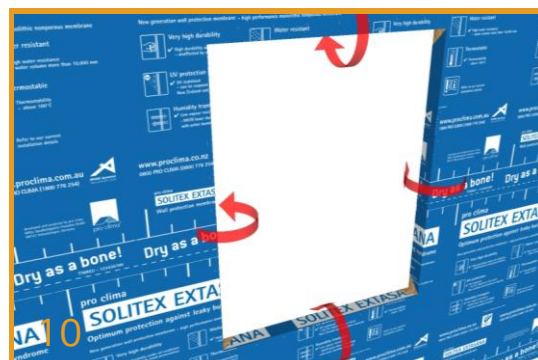
**Overlapping SOLITEX EXTASANA®**  
The membrane shall be overlapped 150 mm. The white line represents the 150 mm overlap line and can be used as guidance to align successive layers.



**Fixing SOLITEX EXTASANA® Around Windows**  
Staples shall be evenly placed around the window at 150 mm centers.



**Window Reveal Dressing**  
Cut the membrane at window reveals with 45° angle cuts forming 4 flaps to be dressed into the reveal.



**Folding the Reveals**  
Fold the SOLITEX EXTASANA® flaps back into the reveals cutting the flaps flush with the back edge of the metal framing.



**Fixing the Reveals**  
The flaps should be fixed into the window reveal using staples at the rear edge of the window reveal spaced evenly at 150 mm centres.



**Connections Using TESCON EXTORA® Flashing Tape**  
Apply at minimum TESCON EXTORA® 60 mm to the horizontal joints and apply pressure with the PRESSFIX tool.



**IMPORTANT**

TESCON EXTOSEAL® is required to be stretched at the window corners. Overstretching TESCON EXTOSEAL® can lead to thinning and tearing.



TESCON EXTOSEAL APPLICATION



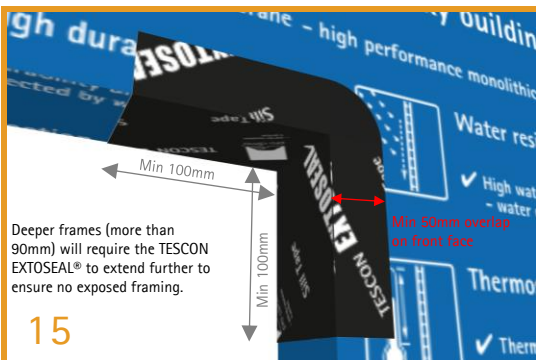
TESCON® ADHISO WS ensures a surface suitable for adhesion of sealants compatible with aluminum.



**Sill Flashing – TESCON EXTOSEAL®**  
Exposed framing at corners of the sill needs to be covered with TESCON EXTOSEAL® Sill Tape to prevent any leaks around windows entering the framing.



**Applying TESCON EXTOSEAL® Sill Tape**  
TESCON EXTOSEAL® Sill Tape should extend minimum 100 mm up the jambs. The corners of the TESCON EXTOSEAL® are stretched & adhered into place.



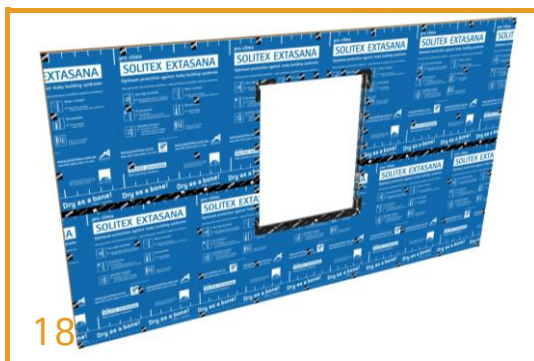
**Window Corner Seal With TESCON EXTOSEAL®**  
TESCON EXTOSEAL® should extend at least 100mm in each direction. For wider frames the 200mm wide TESCON EXTOSEAL® should be used.



**Window Wet Seals – Front & Back Seal**  
TESCON® ADHISO WS is applied to the jambs and header to align with the front & back wet seals according to the window detailing.



**Continuous TESCON® ADHISO WS**  
TESCON® ADHISO WS back seal should be continuous around the entire window. The front seal will be continuous on the jambs and header only.



**Basic Install Completed Around Openings**  
SOLITEX EXTASANA®, TESCON EXTORA® and TESCON EXTOSEAL® form a continuous system. Any damage or tears should be patched with TESCON EXTORA®.



19

#### Internal Corners

Special attention to ensure that curved corners do not occur.



20

#### Corner Connections

Connecting SOLITEX EXTASANA® in the corner can prevent the risk of short corners. Cut flush with the stud.



21

#### Apply Membrane to Faces

Each face of the building should be treated with a new piece of SOLITEX EXTASANA® and can be connected in the corner to prevent curved corners.



22

#### Abutting Membrane at Corners

The second piece should be cut long enough to extend > 50 mm around the corner. A strip of pro clima DUPLEX can be used to hold the flap in place.



23

#### Setting the Corner

pro clima PRESSFIX tool should be used to ensure the membrane is pushed hard into the corner and adhered to DUPLEX and pressure applied with PRESSFIX.



24

#### Taping the Corner

TESCON EXTORA® 60mm should never be applied directly in the corner. The connection should be made on a flat section of wall just away from the corner.





**IMPORTANT**

ROFLEX grommets come in various sizes and it is important the correct size for the pipe is selected and installed to ensure a weathertight seal.



25

**Cutting for Penetrations**

Four slits are made in horizontal and vertical axis only large enough to fit the diameter of the pipe.



26

**Push Pipe Through**

The pipe is pushed through and opens up the tabs. Trim the tabs to allow for ROFLEX and TESCON EXTORA® application.



27

**Fitting ROFLEX**

Place ROFLEX over the pipe in a diamond orientation. It should be a tight fit over the pipe. The pipe should be smooth and clean.



28

**TESCON EXTORA® Application**

Start to apply TESCON EXTORA® 60 mm width at the bottom edge and apply pressure with the PRESSFIX tool.



29

**TESCON EXTORA® Application**

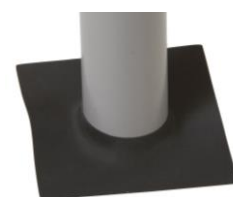
Apply TESCON EXTORA® around the whole grommet working anti-clockwise to ensure the top layers overlap the lower layers.



30

**TESCON EXTORA® Application**

At the TESCON EXTORA® tape overlaps ensure the top layer fully covers the end of the TESCON EXTORA® layer below for optimum weathertightness.



**ROFLEX**  
Sealing grommet made of strong and highly flexible EPDM for rapid and permanent weathertight feedthroughs for pipes.



31

**Abutment**

Where SOLITEX EXTASANA® meets dissimilar wall types (concrete or masonry) a butt joint is formed.



32

**Membrane Butt Joint**

SOLITEX EXTASANA® shall be fixed with 5-6 staple cluster in top corner and staples at 150 mm centres down the edge, and cut flush with the stud edge.



33

**Membrane Overlaps**

Membrane overlaps should be made ensuring 150 mm overlap.



34

**TESCOX EXTORA® Overlap**

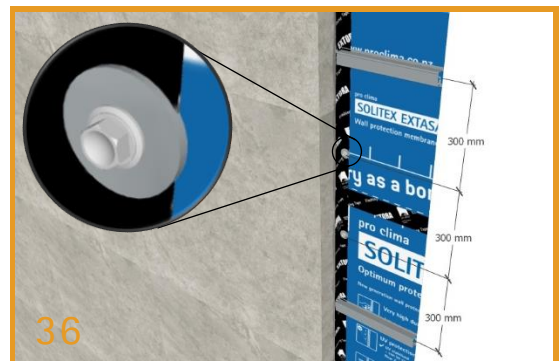
TESCOX EXTORA® shall be applied firmly pressed with PRESSFIX. TESCOX® PRIMER RP shall be applied with a brush to any porous masonry surfaces.



35

**Weatherproof Seal**

TESCOX EXTORA® 60 mm is applied by pressing into the corner with the PRESSFIX. Attention to ensure the tape does not protrude further than the cladding.



36

**Mechanical Fixing**

If SOLITEX EXTASANA® is not supported at the last stud with a vertical top hat then mechanical fixings are required at max. 300 mm centers (see 49 & 50).



**IMPORTANT**

TESCON® PRIMER RP is a primer that penetrates into the sub-surface of porous substrates locking up loose particles and creating a highly adhesive substrate for the TESCON EXTORA® tape to be applied. TESCON EXTORA® can be applied while the TESCON® PRIMER RP is still tacky or fully dry.



**TESCON® PRIMER RP**  
Applied to substrates to prepare for optimum adhesion such as concrete, masonry, timber, fibre cement, plywood, oriented strand board (OSB), and other porous or friable surfaces prior to application of TESCON EXTORA®.



37

**Soffit Junctions**

SOLITEX EXTASANA® butt joints are created at top plates of any infill walls into any type of concrete, masonry or timber soffits.



38

**Fixing SOLITEX EXTASANA®**

SOLITEX EXTASANA® is held in place by stapling 150 mm centers 20–25 mm from the edge.



39

**Preparing the Corner**

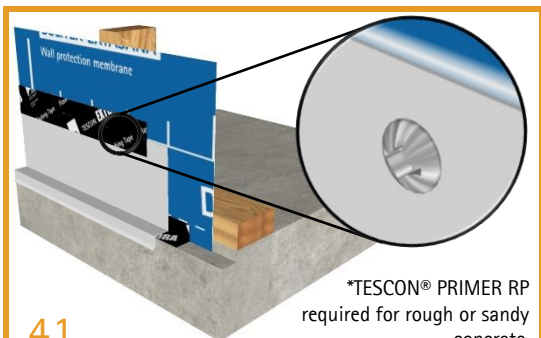
SOLITEX EXTASANA® is cut flush with the soffit. Porous concrete or masonry may need to be primed with TESCON® PRIMER RP using a brush.



40

**Weatherproof Seal**

TESCON EXTORA® 60 mm is applied by pressing into the corner with the PRESSFIX. Attention to ensure the tape does not protrude further than the cladding.



41

**Base Detail connection with TESCON EXTORA®**

SOLITEX EXTASANA® finished flush with the slab and taped onto the concrete. The flashing is fixed with a self-tapper and over taped to the membrane.

\*TESCON® PRIMER RP required for rough or sandy concrete.



42

**Seal to Slab Edge with TESCON EXTORA®**

Seal the membrane to the slab edge using TESCON EXTORA® 100mm apply pressure with the PRESSFIX tool.

\*TESCON® PRIMER RP required for rough or sandy concrete.



## SYSTEM

Weather Resistive Barrier

Wall



43

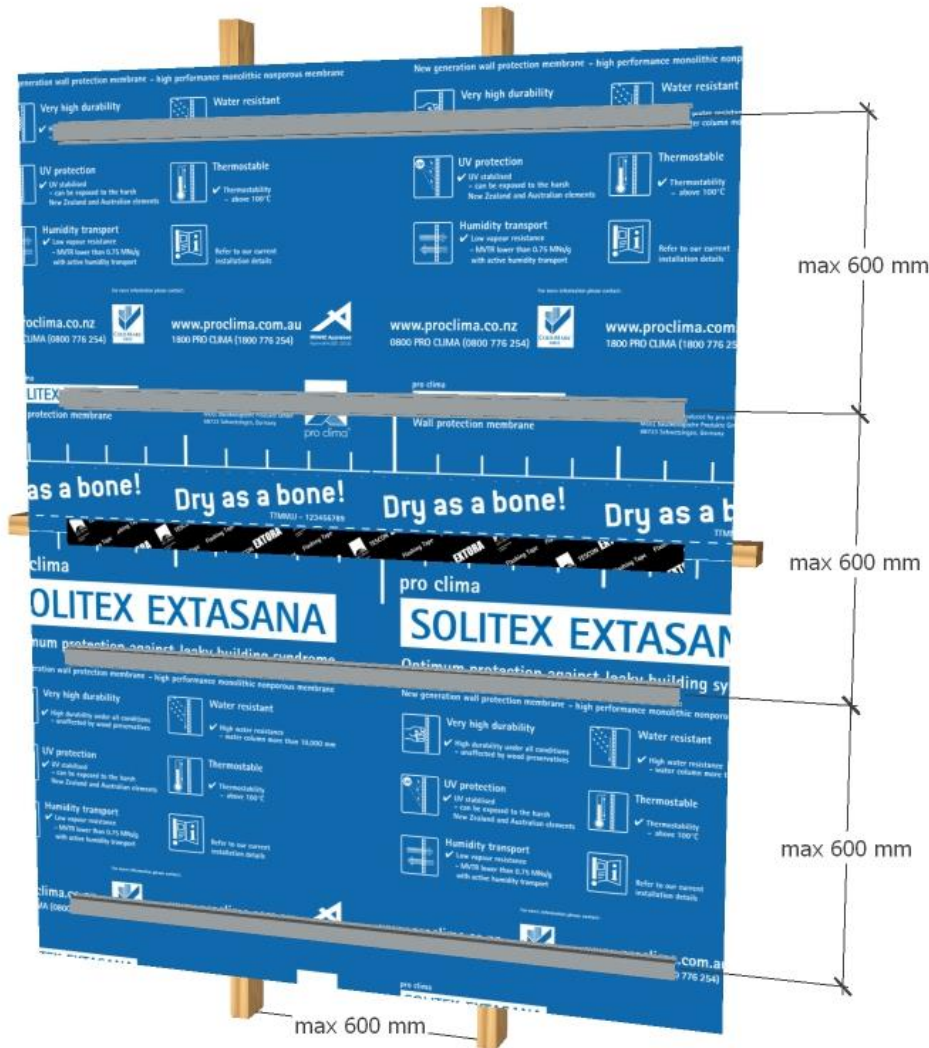
## Vertical Rails 600 mm

Installed vertically to the stud wall, top hats spaced at maximum 600 mm are suitable to hold SOLITEX EXTASANA® up to the serviceability limits defined by Etex Exteriors ANZ with no additional fixings.



**IMPORTANT**

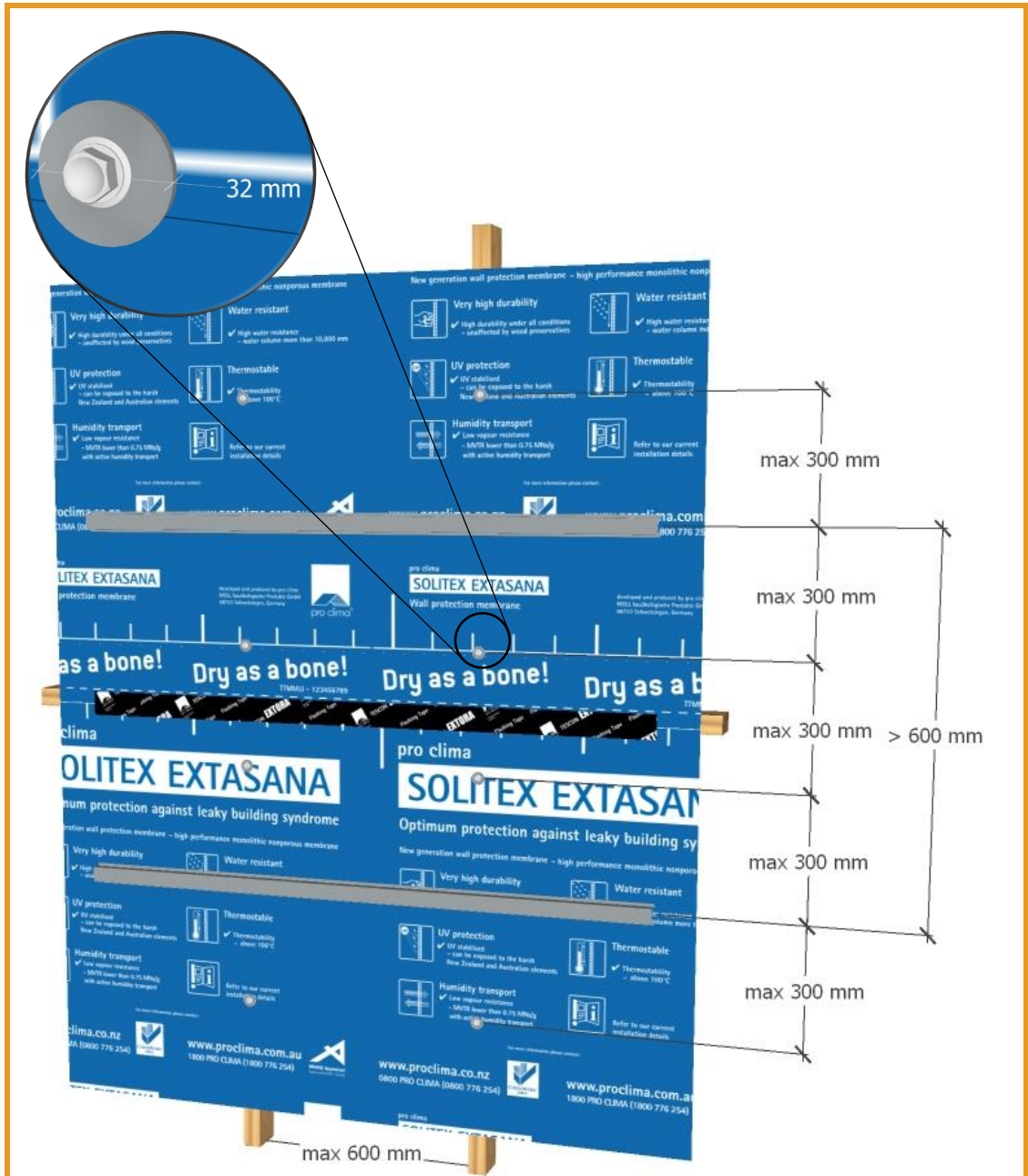
Rails provide continuous support for the membrane under leeward wind pressure. The studs provide support for the membrane under windward pressure. The maximum spans in both directions are 600 mm. Cladding rails at spans larger than 600 mm will require additional point fixings.



**44**

**Horizontal Rails 600 mm**

Installed horizontally over the studs, top hats spaced at maximum 600 mm are suitable to hold SOLITEX EXTASANA® up to the serviceability limits defined by Etex Exteriors ANZ with no additional fixings.



45

Horizontal Rails 900 mm

Horizontal top hats spaced at more than 600 mm require additional fixings to be added in-between to hold SOLITEX EXTASANA® at 300 mm centers with studs at maximum 600 mm centers. Galvanised hex screws needle point with EPDM washer (12 gauge) & 25 mm long used to fix M8 large galvanised flat washers 32 mm diameter to hold SOLITEX EXTASANA® as shown to allow the maximum serviceability pressures defined by Etex Exteriors ANZ.



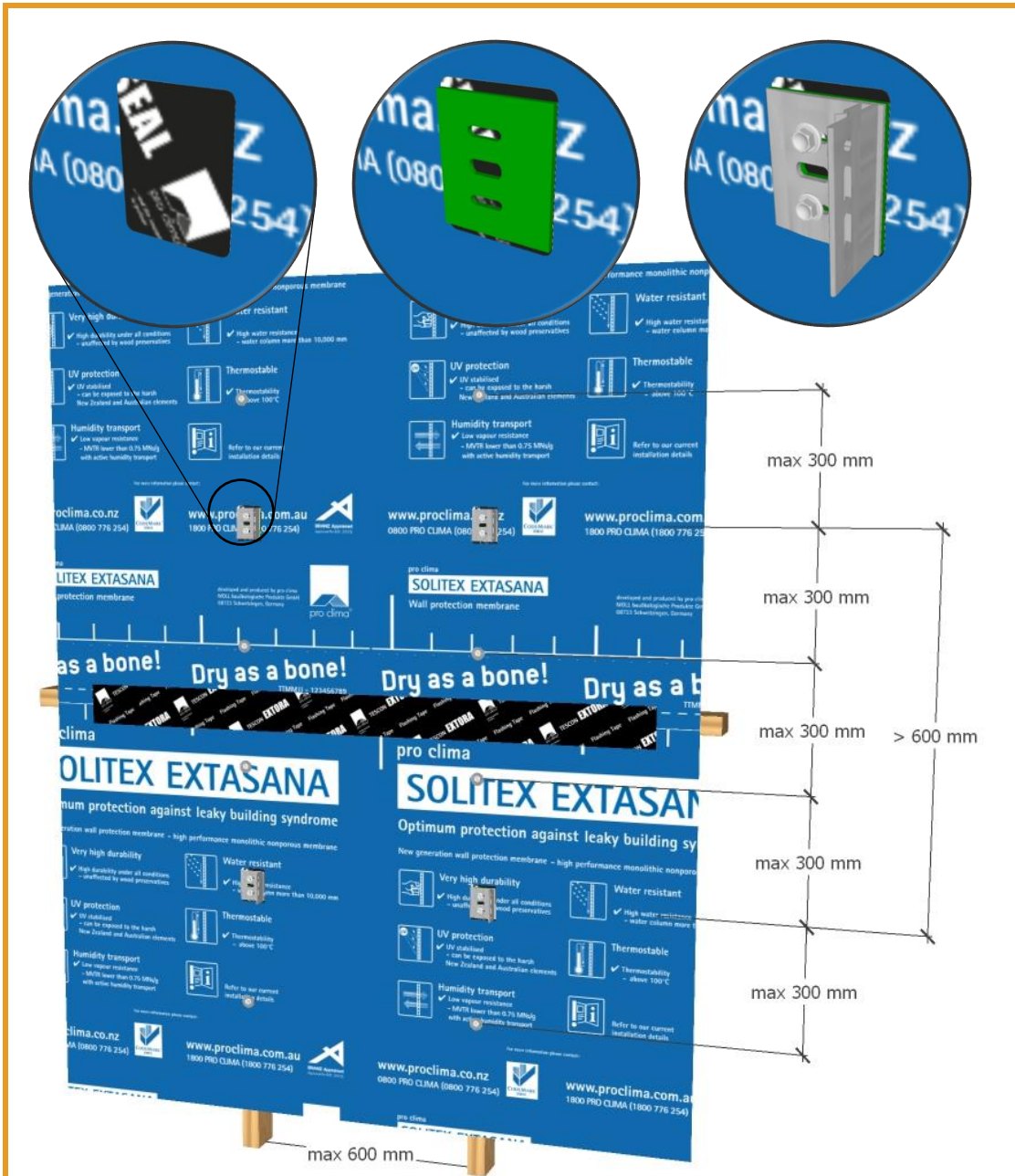


IMPORTANT

TESCON® NAIDECK mono patch is a butyl sealing patch. Sealing material is pulled into the hole created when a screw is fitted. This is particularly important with oval holes where the EPDM washers on the hex screws cannot seal effectively.



TESCON® NAIDECK mono patch Sealing patches for use at bracket mounts and point fixings.



46

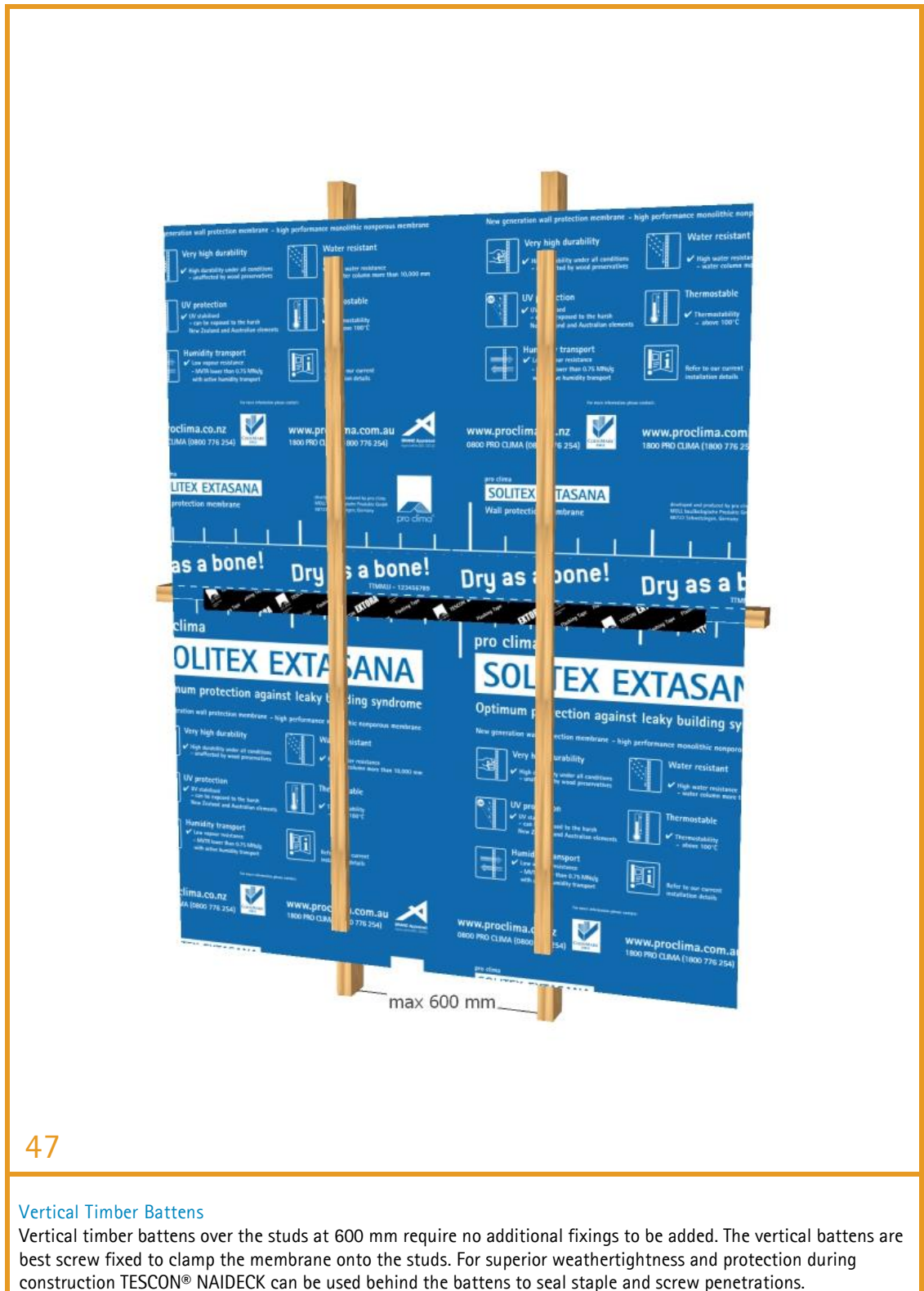
Aluminium Bracketry System

Brackets are evenly spaced onto the stud wall. When spaced > 600 mm additional fixings at max 300 mm centers on max 600 mm center studs are required to hold SOLITEX EXTASANA®. Galvanised hex screws needle point with EPDM washer (12 gauge) & 25 mm long shall be used to fix M8 large galvanised flat washers 32 mm diameter to hold SOLITEX EXTASANA® as shown to allow the maximum serviceability pressures defined by Etex Exteriors ANZ.

## SYSTEM

Weather Resistive Barrier

Wall





**IMPORTANT**

TESCON® NAIDECK is a butyl self-sealing strip. Sealing material is pulled into the hole created when a screw is fitted. This is particularly important for high pressure systems using timber battens over the studs.



TESCON® NAIDECK self-sealing strip for superior weather-tightness when using timber battens over the studs.

		TESCON EXTORA®	TESCON EXTORA® PROFIL	TESCON EXTOSEAL®	ORCON® NAIDECK	CONTEGA® IQ	KAFLEX mono/duo	KAFLEX post	ROFLEX	DURPLEX	TESCON® PRIMER RP
Timber, OSB, Plywood	dirty		✓								✓
	clean	✓	✓	✓	✓						✓
Plaster board	clean	✓	✓	✓	✓						✓
	dirty										
Paint primers		✓	✓	✓	✓	✓				✓	✓
AEROSANA® VISCONN	dry / clean	✓	✓	✓	✓	✓	✓	✓	✓	✓	✓
PIR Polysiocanurate	on foil	✓	✓	✓	✓		✓	✓	✓		✓
	on PIR										
XPS Extruded Polystyrene	clean	✓	✓	✓	✓		✓	✓	✓		✓
EPS Expanded Polystyrene	clean	✓	✓	✓	✓		✓	✓	✓		✓
Expanding foams	dry										
Cement/Gypsum plaster	smooth	✓	✓	✓	✓	✓	✓	✓	✓	✓	✓
	rough				✓						✓
	friable										✓
Acrylic plaster	smooth	✓	✓	✓	✓	✓	✓	✓	✓	✓	✓
	rough				✓						✓
Steel	galvanized	✓	✓	✓	✓						✓
	bright	✓	✓	✓	✓						✓
	painted	✓	✓	✓	✓						✓
Aluminium	clean	✓	✓	✓	✓						✓
Brickwork	rough				✓						✓
	friable										✓
Concrete	smooth	✓	✓	✓	✓	✓	✓	✓	✓		✓
	rough				✓						✓
Fibre cement	clean	✓	✓	✓	✓	✓	✓	✓	✓	✓	✓
	friable										✓
Window Frames	aluminium	✓	✓	✓	✓	✓					✓
	PVC	✓	✓	✓	✓	✓					✓
	timber	✓	✓	✓	✓	✓					✓
Cables	flat	✓	✓	✓	✓		✓				
	round	✓	✓	✓	✓		✓				
Pipes / ductings		✓	✓	✓	✓			✓			

**Notes:**

- Surface should always be dry.
- TESCO® PRIMER RP is always recommended for mineralic surfaces.

48

**pro clima SOLITEX EXTASANA® Product Matrix**

SOLITEX EXTASANA® is compatible with all pro clima Adhesive Tapes and Sealants. Optimum weatherproofing is achieved when wind tight connections are made between SOLITEX EXTASANA® and other building materials and components. The table above provides guidance on the use of pro clima Adhesive Products when used to connect SOLITEX EXTASANA® with other common building materials.





**TESCON EXTORA®**  
Pressure sensitive adhesive tape for overlaps and end laps in SOLITEX EXTASANA® system.



**TESCON EXTOSEAL®**  
Flexible flashing tape for use around window and door openings as part of the SOLITEX EXTASANA® system.



**TESCON® NAIDECK** self-sealing strip for superior weather-tightness when using timber battens over the studs.



**TESCON® ADHISO WS**  
Pure aluminium tape for wet seal connections to TESCON EXTOSEAL® and SOLITEX EXTASANA®.



49

**Point Fasteners**

Galvanised hex screws 12-gauge 25 mm, needle point with EPDM washer to ensure fixings do not allow a water leakage path.



50

**Washers for Load Spreading**

M8 large galvanised flat washers 8 mm x 32 mm x 1.8mm provide load spreading to increase fixing pressure rating.

**Recommendations and requirements**

- The recommendations in this guide use pro clima DUPLEX as a temporary fixing method to hold SOLITEX EXTASANA® as it is being applied to steel framing.
- SOLITEX EXTASANA®, TESCON EXTORA® and TESCON EXTOSEAL® form a continuous system. Any damage or tears should be patched with TESCON EXTORA®.
- When conditions on site are expected to be windy it is recommended that additional fixings are included at regular intervals in accordance with the fixing recommendations in this guide to ensure wind does not pull SOLITEX EXTASANA® from the wall prior to the cladding mounting systems being installed.
- It is recommended that the cladding mounting systems are installed as soon as possible after installing the membrane and close attention is paid to wind forecasts.
- pro clima KAFLEX can be used for cable penetrations when necessary.
- Although SOLITEX EXTASANA® provides a level of weather protection prior to cladding it is not intended as an early close in system and is designed and tested in combination with EQUITONE / CEDRAL cladding systems to provide weathertightness up to the pressure thresholds specified by Etex Exteriors ANZ.

**Certification of SOLITEX EXTASANA®**



**Your local support**

Pro Clima New Zealand  
04 589 8460 | 09 892 9900 | 03 327 4925  
Technical: [support@proclima.co.nz](mailto:support@proclima.co.nz)  
General: [welcome@proclima.co.nz](mailto:welcome@proclima.co.nz)  
[www.proclima.co.nz](http://www.proclima.co.nz)

Etex Exteriors ANZ  
[+61 3 9988 2290](tel:+61399882290)  
[info.australia@equitone.com](mailto:info.australia@equitone.com)  
[www.equitone.com](http://www.equitone.com)  
[info.anz@cedral.world](mailto:info.anz@cedral.world)  
[www.cedral.world](http://www.cedral.world)

